

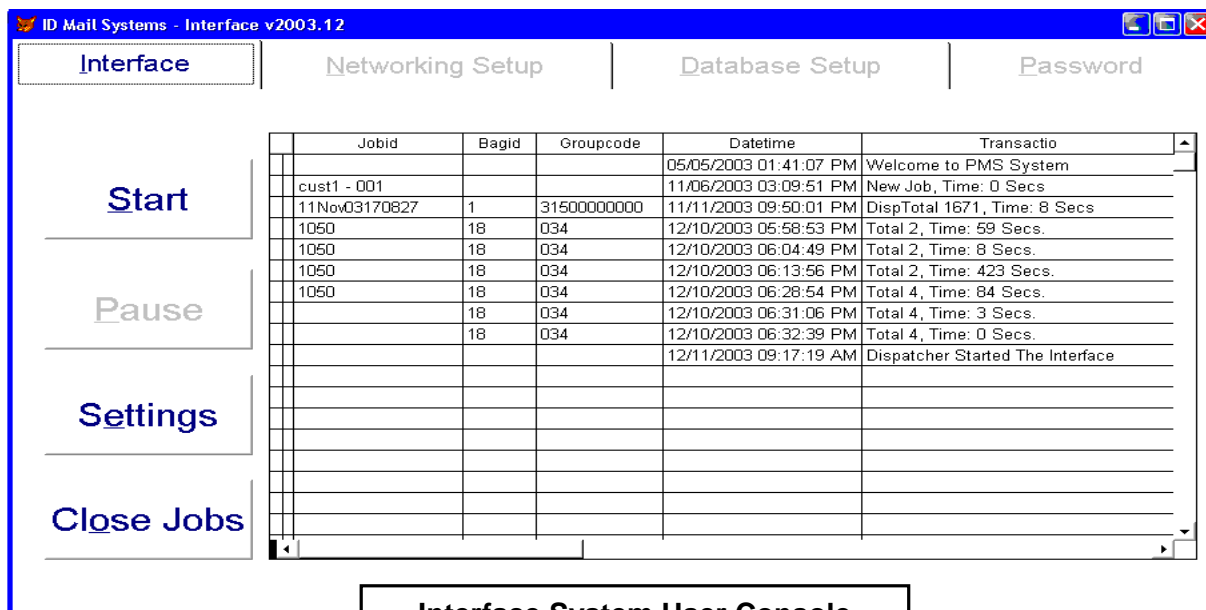
The link between a customer's Management Information System (MIS) and its mail-handling equipment is critical in creating an efficient processing environment. ID Mail's Interface System streamlines this critical link by automating many important data-handling tasks including:

- Distribution of job setup information to each networked product
- Delivery of job setup information to minimize processing bottlenecks
- Collection of all completed job information from each node
- Transfer of closed job data to the MIS
- Updates for bag closures when the bagging function is employed

In addition, because the data for completed jobs is automatically collected and transferred to the MIS in a pre-determined format, the Interface System provides these post-processing benefits:

- Invoicing activities can begin immediately following job completion
- Job completion information can be immediately communicated to the mailer
- Enhanced accuracy for invoicing and subsequent reporting

From the user console, the Interface System automatically transfers previously entered job setup information from the customer's MIS to any product connected as a node on ID Mail's



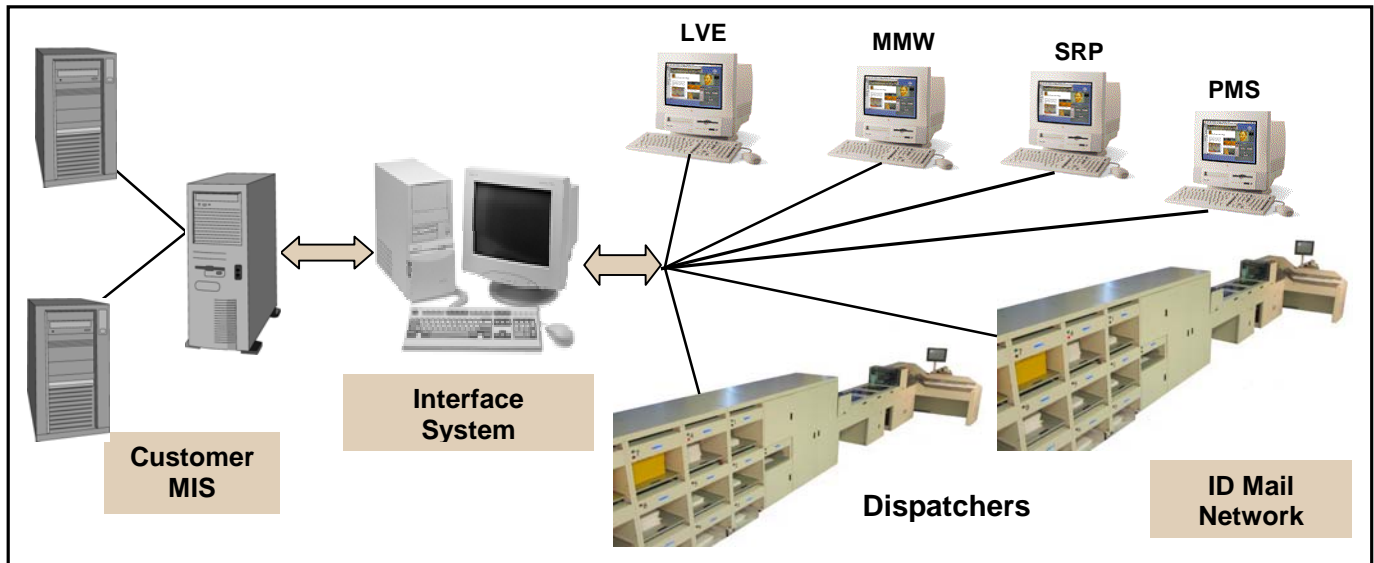
Interface System User Console

network. Upon job completion the user can select one or multiple jobs for closure from the user console. The System then collects all processed mail data for the closed job(s) and automatically transfers the data to the customer MIS.

Do you have a mailing application that needs to be automated?
 Call toll free: 888 – IDMAIL9 or send us an email at sales@idmailsystems.com
 Visit our web site at www.idmailsystems.com to learn more about our products and services

The Interface System can transfer and receive information with each of these ID Mail products:

- Dispatcher Mixed-Mail processing platform
- Manual Mail Workstations (MMW) for non-machineable items
- Local Video Encoding (LVE) for coding hard to recognize items
- Secondary Recognition Processing (SRP) system
- Project Management System (PMS)



Multiple units of each product can be connected to the Interface System as a node on the ID Mail network.

Interface System Specifications	
Hardware	
	Personal computer with monitor, keyboard and mouse
	Networking switch (sized to support required number of nodes)
Software	
	Windows NT, 2000 and XP Professional
	Interface System operating software including these automated functions:
	- Job input transfer to all connected nodes
	- Job data collection
	- Data transfer to customer MIS
	- Monitoring of bag closures and transfer to MIS
	Graphical user interface
	SQL Server and dBase versions available
Versions	
	- Data Management version with software to provide job input downloads and job closing for multiple nodes
	- Data Interface version with software to provide job input downloads for a single node
Language Translations	
	English, French, German and Spanish

Do you have a mailing application that needs to be automated?

Call toll free: 888 – IDMAIL9 or send us an email at sales@idmailsystems.com
 Visit our web site at www.idmailsystems.com to learn more about our products and services